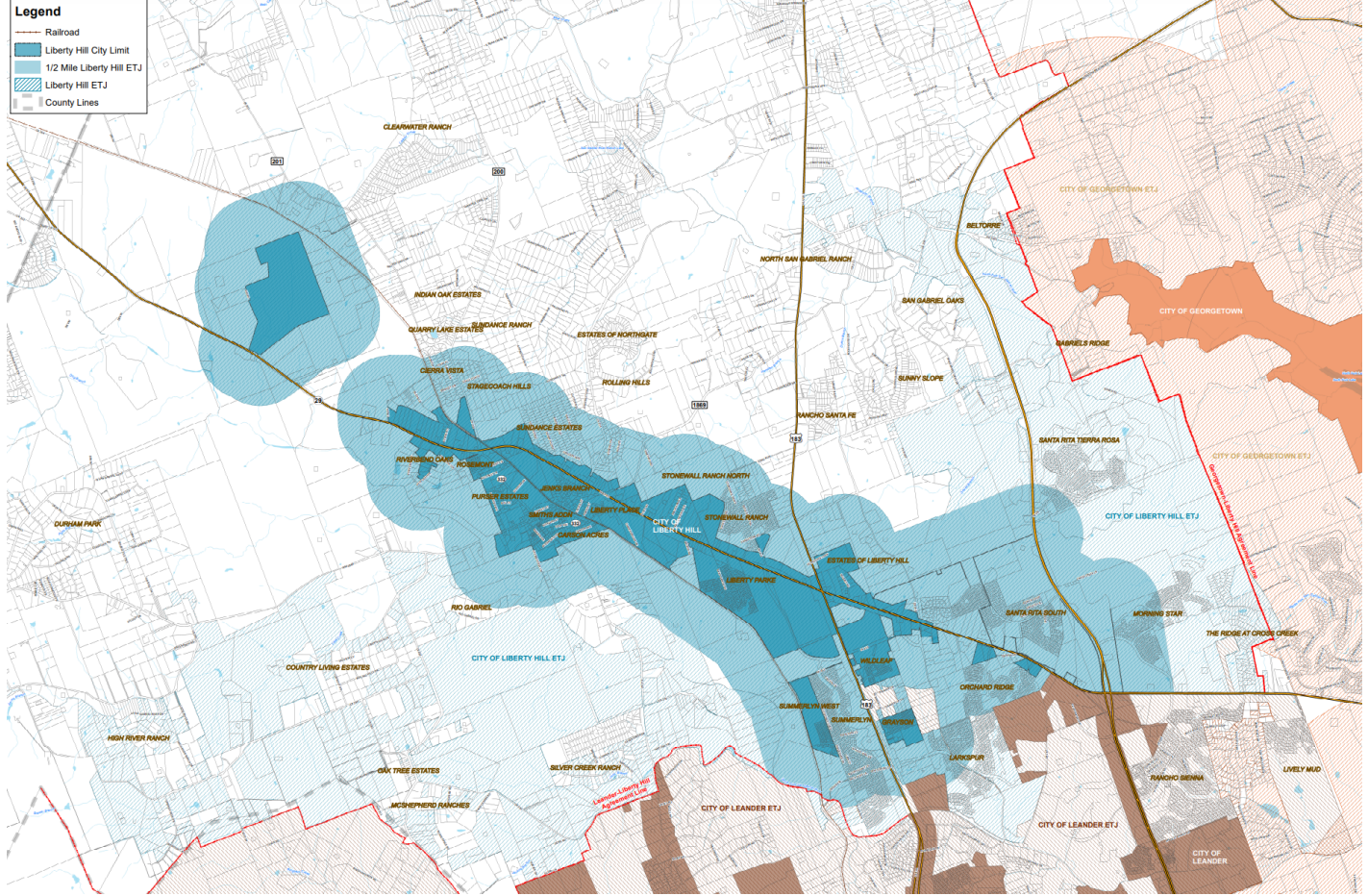


Legend

- Railroad
- Liberty Hill City Limit
- 1/2 Mile Liberty Hill ETJ
- Liberty Hill ETJ
- County Lines



LIBERTY HILL ROADWAYS

Who to Contact...



TXDOT
 SH 29 Corridor
 US 183
 RR 1869



WILLIAMSON COUNTY
 County Roads | Ronald Reagan Blvd
 Liberty Hill Bypass | Corridor I2
 Subdivisions Outside City Limits



CITY OF LIBERTY HILL
 Loop 332
 Subdivisions Inside City Limits

Subdivisions
INSIDE CITY LIMITS

Carson Acres | Grayson | Liberty Parke
 Purser Estates | Rosemont
 Summerlyn West | Wildleaf

Subdivisions
OUTSIDE CITY LIMITS

High River Ranch | Indian Oak Estates
 Larkspur | McShepherd Ranches
 North San Gabriel Ranch | Oak Tree Estates
 Quarry Lake Estates | Rancho Santa Fe
 Rio Gabriel | Rolling Hills | San Gabriel Oaks
 Santa Rita | Silver Creek Ranch | Stagecoach
 Stonewall Ranch | Summerlyn
 Sundance Estates | Sundance Ranch
 Sunny Slope | The Ridge at Cross Creek
MUD Maintained - Orchard Ridge | MorningStar

(512) 778-5449

www.libertyhilltx.gov



LIBERTY HILL
 TEXAS



The City of Liberty Hill wants to hear your thoughts about traffic! Scan the code to fill out survey.

WILLIAMSON COUNTY

Precinct 2

One of the major functions of county government is to build and maintain a network of roads and bridges in unincorporated areas of the county.



CURRENT WILCO PROJECTS

- Corridor F
- Corridor I2
- CR 200
- CR 201
- CR 258 Extension
(US 183 To Sunset Ridge Dr)
- CR 279/Bagdad Road
(Loop 332 to CR 281/Leander City Limits)
- Liberty Hill Bypass
- RM 2243 (Hero Way)
- Ronald Reagan Widening
- Seward Junction Southeast
- Seward Junction Southwest

**SCAN TO LEARN
MORE ABOUT
WILCO PROJECTS**